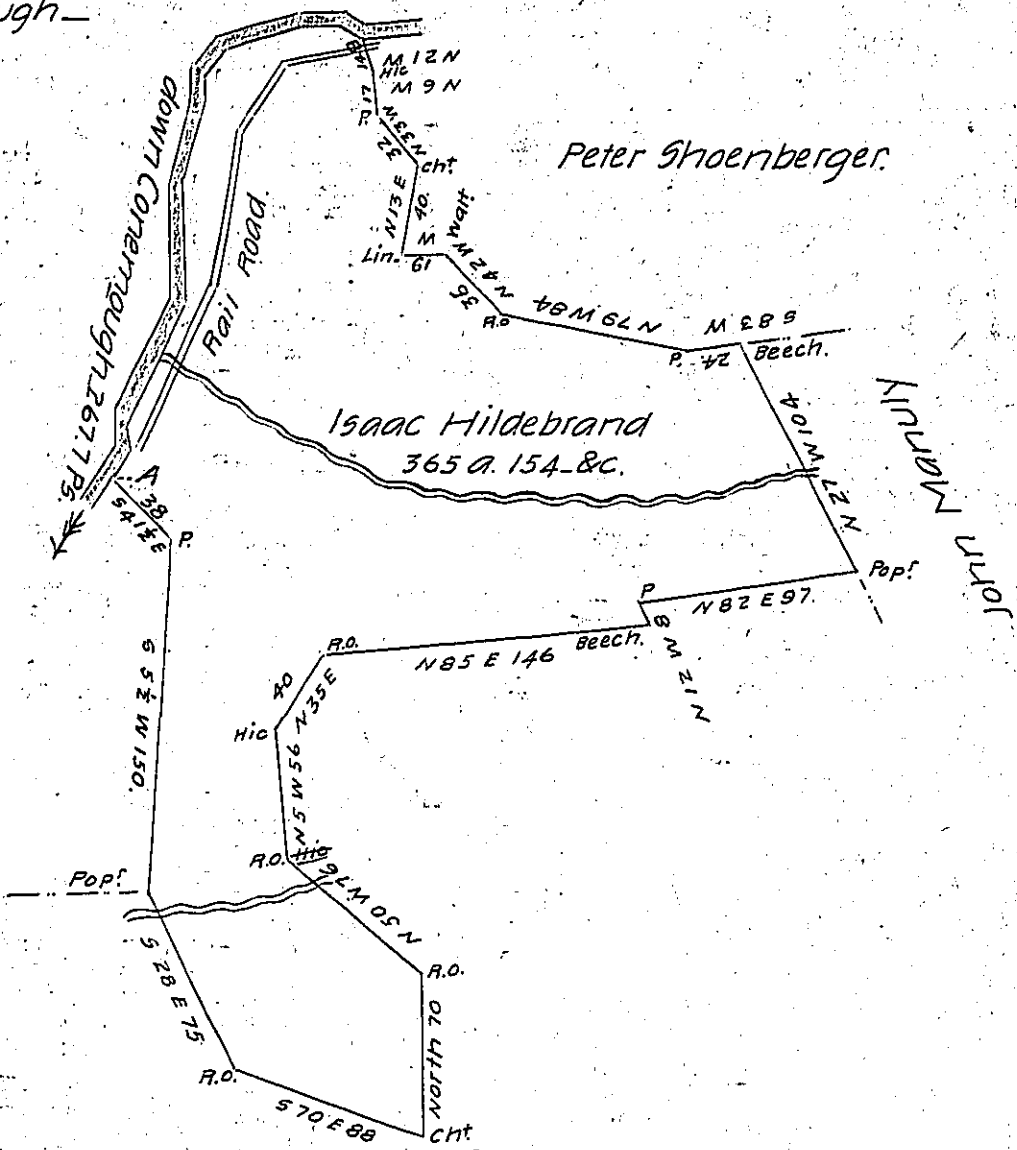


Courses & distance - down Conemough -
from the letter B to A.

- N 56 W 12 Hic
- West 16.00
- S 71 W 38
- S 34 W 12
- South 13.7
- S 17 W 36
- South 52
- S 26 1/2 W 66
- S 16 E 8
- S 34 W 14
- 267.7 Ps

Sylvester Welsh Esq
instead of Samuel



Situate on the Conemough River about 2 miles above Johnstown
Conemough Twp Cambria County, Surveyed on Warrant dated the *16th
day of Decr. 1833 granted to Isaac Hildebrand Contg three hundred &
sixty-five acres & one hundred & ~~four~~ fifty-four ps and allowance

by

Jacob Spangler Esq

Wm O'Keefe D.S.

Surveyor Genl

* Say 27th Jan'y 1834

IN TESTIMONY that the above is a copy of the original remaining on file in
the Department of Internal Affairs of Pennsylvania, made
conformably to an Act of Assembly approved the 16th day of
February, 1833, I have hereunto set my Hand and caused
the Seal of said Department to be affixed at Harrisburg,
this seventh day of June 1905.

Joseph R. Brown
Secretary of Internal Affairs.